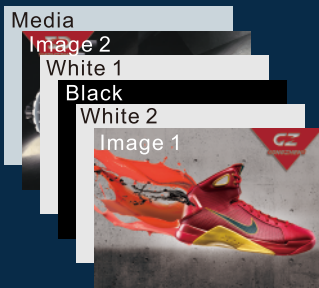
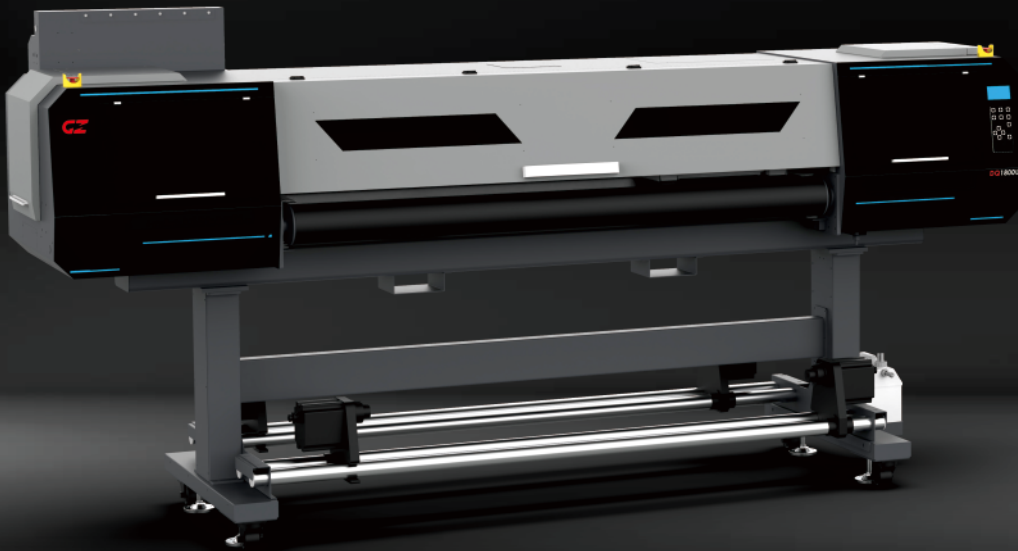




Mesh Belt 1.8M UV printer  
Fashion designed Body &  
Excellent performance

**T HUNDERJET**  
BEYOND YOUR IMAGINATION

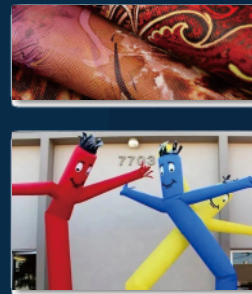
**DQ1800UV**



**Multi-layer printing technique!**

Available with 3/4/5 layers printing.

**Deliver stunning printings for various applications !**



Multi-layer printing



White ink recirculation



Powerful blower for 3 zones



Anti-collision unit

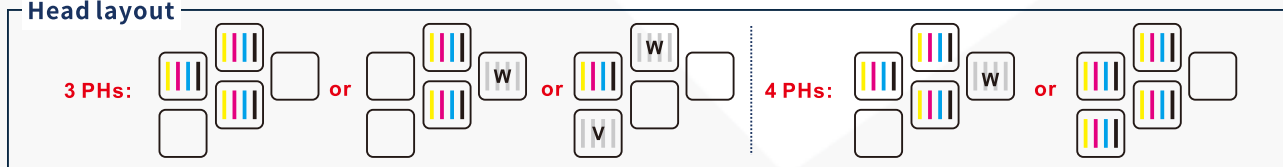


# HUNDERJET DQ1800UV

ITEM	SPECIFICATION				
Model	ThunderJet DQ1800UV				
Print Head	3~4 Epson I3200 U1 print heads				
Technology	Piezo Variable dot(Greyscale)				
Curing Sytem	Duel water cooling LED UV lamps				
Ink	Flexible UV Ink				
Color Config.	KCMY; KCMY+W; W+KCMY +V				
Ink Supply System	Bulk ink supply system + White Ink Recirculation System				
Ink Tank	1000ml				
Printing Width	Max.1800mm				
Media Type					
Roll Diameter	Max. 300mm				
Roll Weight	Max. 50kgs				
Core Diameter	3 in (76.2mm) or 2 in (50.8mm)				
Printing Speed	Mode	Resolution	Color(3H)	CWC	CWKWC
	Draft	720x1200 dpi	46.8m <sup>2</sup> /h	20m <sup>2</sup> /h	
	Production	720x1200 dpi	41m <sup>2</sup> /h	17m <sup>2</sup> /h	3.9m <sup>2</sup> /h
	High-res	720x1800 dpi	32.5m <sup>2</sup> /h	11m <sup>2</sup> /h	
	Photo	720x1800 dpi	23m <sup>2</sup> /h	7.6m <sup>2</sup> /h	2.6m <sup>2</sup> /h
Data Interface	External: Ethernet; Internal: Fiber Optical				
Working Environment	Temp.23°C~29°C, Humidity:50%~80%				
Software	FlexiPRINT/ ONYX(Optional)+GZ Printer Manager				
Power	Single phase, 50Hz/AC, 220V±10%, 5A(Printer+UV Controller)				
Packed/Installed Size	LxWxH(mm):3600x1150x950/3433x1052x1663				
G.W./ N.W.	761kgs/ 615kgs				

Specifications are liable to change without prior notice. The printing speeds are measured in 1.8 m width printing.

## Head layout



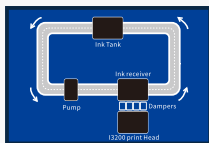
### Mesh Belt System

Mesh Belt Type suits a wider range of materials, especially for those materials with tension. It ensures the precise guide and good printing performance.



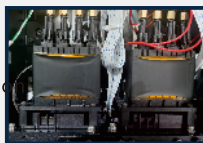
### Multi-layer Printing Application

Particularly designed for multi-layer applications: colorful; 2layers:W+C/C+W; 3layers:CWC; 4layers:CKWC-Day and Night; 5layers:CKWKC on demand with fine details.



### White Ink Recirculation System

The white ink is circulated at regular intervals during idle time to prevent pigment sedimentation that leads to malfunctions of the print head.



### Intelligent Heating Unit

New-developed heating for ink supply system and print head to ensure smooth ink flow and stable printing performance.

## Gongzheng Group Co., Ltd.

Add: Miaobei Village, Yongjia County, Wenzhou City, Zhejiang Province, China 325105  
Tel: +86-577-67319778  
Email: gzsales@gongzheng.com  
Web: www.gongzheng.com



@GONGZHENG GROUP

## Authorized distributor:

